

# US3912.05 2.5XD

**Operaciones:** Desbaste

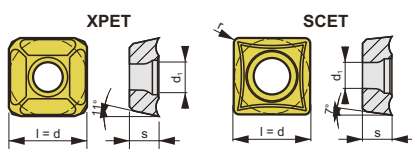
Broca que mejora el control de viruta y ofrece gran resistencia ante la fatiga.

US3912.05.15.25.125 + 10 XPET0502 +10 SCET0502	293€
US3912.05.16.25.126 + 10 XPET0502 +10 SCET0502	299€
US3912.05.17.25.129 + 10 XPET0502 +10 SCET0502	296€
US3912.05.18.25.130 + 10 XPET0602 +10 SCET0502	282€
US3912.05.19.25.133 + 10 XPET0602 +10 SCET0602	311€
US3912.05.20.25.134 + 10 XPET0602 +10 SCET0602	302€
US3912.05.21.25.137 + 10 XPET0602 +10 SCET0602	300€
US3912.05.22.25.138 + 10 XPET0703 +10 SCET0602	309€
US3912.05.23.25.141 + 10 XPET0703 +10 SCET0703	314€
US3912.05.24.25.142 + 10 XPET0703 +10 SCET0703	314€
US3912.05.25.32.151 + 10 XPET0703 +10 SCET0703	317€
US3912.05.26.32.153 + 10 XPET0703 +10 SCET0703	327€
US3912.05.27.32.155 + 10 XPET0903 +10 SCET0703	325€
US3912.05.28.32.157 + 10 XPET0903 +10 SCET09T3	339€
US3912.05.29.32.159 + 10 XPET0903 +10 SCET09T3	339€
US3912.05.30.32.161 + 10 XPET0903 +10 SCET09T3	340€
US3912.05.31.32.163 + 10 XPET0903 +10 SCET09T3	343€
US3912.05.32.40.177 + 10 XPET0903 +10 SCET09T3	365€

## Calidades de placa

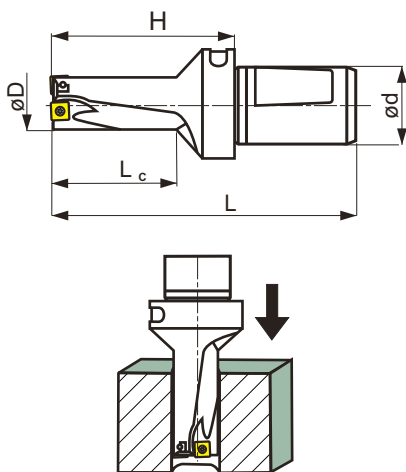
SCET EO30D / TO30  
XPET TO40

### Plaquitas:



	d (mm)	l (mm)	d <sub>1</sub> (mm)	s (mm)	r (mm)
XPET 0502	5,566	5,566	2,4	2,38	-
XPET 0602	6,350	6,350	2,6	2,38	-
XPET 0703	7,937	7,937	2,9	3,18	-
XPET 0903	9,525	9,525	3,5	3,18	-
SCET 0502	5,566	5,566	2,4	2,38	0,4
SCET 0602	6,350	6,350	2,9	2,38	0,4
SCET 0703	7,937	7,937	3,5	3,18	0,4
SCET 09T3	9,525	9,525	4,5	3,97	0,8

### Datos técnicos:



### REF.

2,5XD	øD	ød	L	H	Lc	Z	Placa		
US3912.05.15.25.125	15	25	125	69	38	1+1	XPET 0502+SCET 0502	AP-0522	EE-07
US3912.05.16.25.126	16	25	126	70	40	1+1	XPET 0502+SCET 0502	AP-0522	EE-07
US3912.05.17.25.129	17	25	129	73	43	1+1	XPET 0502+SCET 0502	AP-0522	EE-07
US3912.05.18.25.130	18	25	130	74	45	1+1	XPET 0602+SCET 0502	AD-25+AP-0522	EE-07
US3912.05.19.25.133	19	25	133	77	48	1+1	XPET 0602+SCET 0602	AD-25	EE-07
US3912.05.20.25.134	20	25	134	78	50	1+1	XPET 0602+SCET 0602	AB-25	EE-07
US3912.05.21.25.137	21	25	137	81	53	1+1	XPET 0602+SCET 0602	AB-25	EE-07
US3912.05.22.25.138	22	25	138	82	55	1+1	XPET 0703+SCET 0602	AB-25	EE-07
US3912.05.23.25.141	23	25	141	85	58	1+1	XPET 0703+SCET 0703	AB-25+AB-30	EE-07+EE-08
US3912.05.24.25.142	24	25	142	86	60	1+1	XPET 0703+SCET 0703	AB-25+AB-30	EE-07+EE-08
US3912.05.25.32.151	25	32	151	91	63	1+1	XPET 0703+SCET 0703	AB-25+AB-30	EE-07+EE-08
US3912.05.26.32.153	26	32	153	93	65	1+1	XPET 0703+SCET 0703	AB-25+AB-30	EE-07+EE-08
US3912.05.27.32.155	27	32	155	95	68	1+1	XPET 0903+SCET 0703	AB-30	EE-08
US3912.05.28.32.157	28	32	157	97	70	1+1	XPET 0903+SCET 09T3	AB30+AD-40	EE-08+EE-15
US3912.05.29.32.159	29	32	159	99	73	1+1	XPET 0903+SCET 09T3	AB30+AD-40	EE-08+EE-15
US3912.05.30.32.161	30	32	161	101	75	1+1	XPET 0903+SCET 09T3	AB30+AD-40	EE-08+EE-15
US3912.05.32.40.177	32	40	177	109	80	1+1	XPET 0903+SCET 09T3	AB30+AD-40	EE-08+EE-15

### Repuestos



S/Medidas S/Medidas

www.euskron.com

# US3912.05 3XD

**Operaciones:** Desbaste

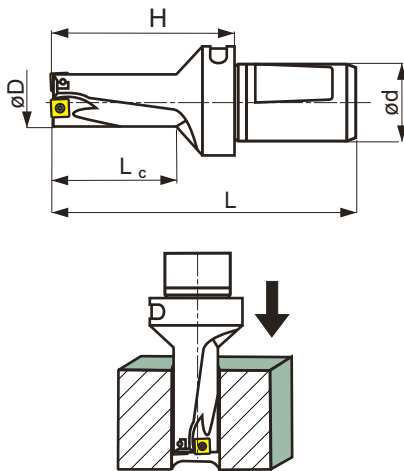
Broca que mejora el control de viruta y ofrece gran resistencia ante la fatiga.

US3912.05.15.25.136	+ 10	XPET0502	+10	SCET0502	294€
US3912.05.16.25.139	+ 10	XPET0502	+10	SCET0502	304€
US3912.05.17.25.142	+ 10	XPET0502	+10	SCET0502	300€
US3912.05.18.25.145	+ 10	XPET0602	+10	SCET0502	299€
US3912.05.19.25.148	+ 10	XPET0602	+10	SCET0602	321€
US3912.05.20.25.151	+ 10	XPET0602	+10	SCET0602	318€
US3912.05.21.25.154	+ 10	XPET0602	+10	SCET0602	302€
US3912.05.22.25.157	+ 10	XPET0703	+10	SCET0602	331€
US3912.05.23.25.160	+ 10	XPET0703	+10	SCET0703	335€
US3912.05.24.25.163	+ 10	XPET0703	+10	SCET0703	338€
US3912.05.25.32.170	+ 10	XPET0703	+10	SCET0703	356€
US3912.05.26.32.173	+ 10	XPET0703	+10	SCET0703	357€
US3912.05.27.32.176	+ 10	XPET0903	+10	SCET0703	336€
US3912.05.28.32.179	+ 10	XPET0903	+10	SCET09T3	354€
US3912.05.29.32.182	+ 10	XPET0903	+10	SCET09T3	351€
US3912.05.30.32.185	+ 10	XPET0903	+10	SCET09T3	358€
US3912.05.31.32.188	+ 10	XPET0903	+10	SCET09T3	358€
US3912.05.32.40.199	+ 10	XPET0903	+10	SCET09T3	381€

**Plaquitas:**

	d (mm)	l (mm)	d <sub>1</sub> (mm)	s (mm)	r (mm)
XPET 0502	5,566	5,566	2,4	2,38	-
XPET 0602	6,350	6,350	2,6	2,38	-
XPET 0703	7,937	7,937	2,9	3,18	-
XPET 0903	9,525	9,525	3,5	3,18	-
SCET 0502	5,566	5,566	2,4	2,38	0,4
SCET 0602	6,350	6,350	2,9	2,38	0,4
SCET 0703	7,937	7,937	3,5	3,18	0,4
SCET 09T3	9,525	9,525	4,5	3,97	0,8

**Datos técnicos:**



**REF.**

**3XD**

REF.	øD	ød	L	H	Lc	Z	Placa		
US3912.05.15.25.136	15	25	136	80	49	1+1	XPET 0502+SCET 0502	AP-0522	EE-07
US3912.05.16.25.139	16	25	139	83	53	1+1	XPET 0502+SCET 0502	AP-0522	EE-07
US3912.05.17.25.142	17	25	142	86	56	1+1	XPET 0502+SCET 0502	AP-0522	EE-07
US3912.05.18.25.145	18	25	145	89	60	1+1	XPET 0602+SCET 0502	AD-25+AP-0522	EE-07
US3912.05.19.25.148	19	25	148	82	63	1+1	XPET 0602+SCET 0602	AD-25	EE-07
US3912.05.20.25.151	20	25	151	95	67	1+1	XPET 0602+SCET 0602	AB-25	EE-07
US3912.05.21.25.154	21	25	154	98	70	1+1	XPET 0602+SCET 0602	AB-25	EE-07
US3912.05.22.25.157	22	25	157	101	74	1+1	XPET 0703+SCET 0602	AB-25	EE-07
US3912.05.23.25.160	23	25	160	104	77	1+1	XPET 0703+SCET 0703	AB-25+AB-30	EE-07+EE-08
US3912.05.24.25.163	24	25	163	107	81	1+1	XPET 0703+SCET 0703	AB-25+AB-30	EE-07+EE-08
US3912.05.25.32.170	25	32	170	110	82	1+1	XPET 0703+SCET 0703	AB-25+AB-30	EE-07+EE-08
US3912.05.26.32.173	26	32	173	113	85	1+1	XPET 0703+SCET 0703	AB-25+AB-30	EE-07+EE-08
US3912.05.27.32.176	27	32	176	116	89	1+1	XPET 0903+SCET 0703	AB-30	EE-08
US3912.05.28.32.179	28	32	179	119	92	1+1	XPET 0903+SCET 09T3	AB30+AD-40	EE-08+EE-15
US3912.05.29.32.182	29	32	182	122	96	1+1	XPET 0903+SCET 09T3	AB30+AD-40	EE-08+EE-15
US3912.05.30.32.185	30	32	185	125	99	1+1	XPET 0903+SCET 09T3	AB30+AD-40	EE-08+EE-15
US3912.05.31.32.188	31	32	188	128	103	1+1	XPET 0903+SCET 09T3	AB30+AD-40	EE-08+EE-15
US3912.05.32.40.199	32	40	199	131	102	1+1	XPET 0903+SCET 09T3	AB30+AD-40	EE-08+EE-15

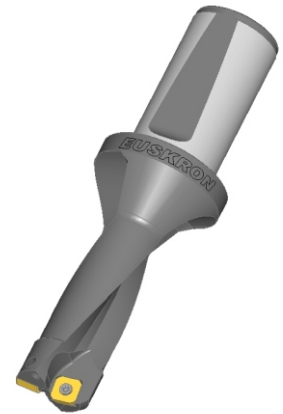
**Repuestos**



S/Medidas S/Medidas

## Calidades de placa

SCET EO30D / TO30  
XPET TO40



www.euskron.com